



Adobe™ Acrobat™ Reader

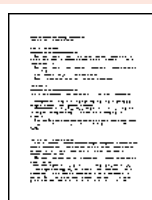
Version 1.0 for Windows™

GETTING STARTED



INSTALLATION

See the next page for instructions on how to install the program.



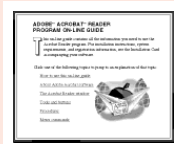
READ ME

See the Read Me file installed with Acrobat Reader for important information about the program.



TOUR

Take the Acrobat Reader Tour for a quick overview of the Acrobat Reader features.



ON-LINE GUIDE

See the Acrobat Reader on-line guide for a complete description of the program.



QUICK REFERENCE CARD

See the QRC for a brief description of Acrobat Reader commands and features.

Acrobat Reader package contents

The Acrobat Reader package contains the following items:

- The Acrobat Reader program
- *Acrobat Reader Program On-line Guide* and *Acrobat Reader Tour*
- Adobe Type Manager™ (ATM™) software
- Two multiple master typefaces for font substitution
- 14 Adobe Type 1 fonts
- The Acrobat Reader README.WRI file, containing the latest information about the program
- Adobe Acrobat Reader Quick Reference Card
- Adobe Acrobat Reader Getting Started Card
- Adobe Acrobat Reader Network File Server Setup for System Administrators Card

System requirements

To use the Windows™ version of the Acrobat Reader program, you need

- A 386- or 486-based personal computer
- Microsoft®Windows 3.1 or later
- 4 megabytes (MB) of RAM (8 MB of RAM recommended)
- VGA, SVGA, or higher resolution display adapter supported by Windows 3.1

Note: Acrobat Reader does not support the Hercules® display adapter.

- A 1.44 MB 3.5-inch floppy disk drive
- A hard disk drive with at least 6 MB of free space (or 5.5 MB or free disk if you choose not to install the tour)
- A PostScript™ printer or other Windows-compatible output device

Installing the Acrobat Reader program

The Acrobat Reader Installer installs the Acrobat Reader program, on-line guide, and tour, the ATM software, and Adobe Type 1 fonts.

Before running the Acrobat Reader Installer, you may want to open the README.WRI file for the latest Acrobat Reader program information; you can open the file using the Write application supplied with Windows. The README.WRI file is located on the Acrobat Reader program *Installer-Disk 1*.

TO INSTALL THE WINDOWS VERSION OF THE ACROBAT READER PROGRAM:

1. Start Windows. If Windows is already running, quit all applications.
2. Insert the disk labeled *Installer-Disk 1* in the floppy disk drive.
3. From the Program Manager, choose Run from the File menu. The Run dialog box appears.
4. Enter **a:aasetup** (or **b:aasetup** if you're using the b: drive) and click OK. The Acrobat Reader license agreement screen appears.
5. If you accept the license agreement conditions for the Acrobat Reader software, click Accept. The Acrobat Reader Installer dialog box appears
6. Unless you are reinstalling either the Acrobat Reader or ATM program, leave both check boxes selected and click Install. The Acrobat Reader Installer dialog box appears.
7. If you do not want to install the Acrobat Reader Tour , deselect the check box for that item. The dialog box shows how much disk space is required for the items you choose to install.
8. Accept the default target directory for the Acrobat Reader program, or enter the path name of a different directory.
9. Click Install. A message appears asking you to complete and return the registration card.
10. Click OK. A dialog box appears that prompts you for your name, the name of your organization, and the serial number of the Acrobat Reader program. The serial number is located on the last page of this card.
11. Enter the requested information and click OK. A message appears that prompts you to insert *Installer-Disk 1*. (*Installer-Disk 1* is already in your disk drive.)
12. Click OK. The Installer begins copying files to your hard disk.

13. If you chose not to install the ATM program in step 6, a message appears telling you that installation is complete. Click OK to return to the Program Manager.

If you chose to install ATM in step 6, continue to the next procedure.

TO INSTALL THE ATM SOFTWARE:

1. If you chose to install the ATM program in step 6 of the preceding procedure, a dialog box appears prompting you to insert the ATM disk.
2. Insert the ATM disk and click OK. The ATM Installer dialog box appears.
3. Accept the default target directories for the PostScript language font and font metrics files, or enter different directory names. (Usually, it is best to accept the defaults. Many applications expect to find PostScript language fonts in c:\psfonts.)
4. Click Install. The ATM installer copies files to your hard disk. When the ATM Installer finishes copying font files to your hard disk, a message appears prompting you either to restart Windows or to exit to DOS.
5. Click Restart Windows to restart Windows and return to the Program Manager.

Starting the Acrobat Reader program

The Acrobat Reader Installer creates a program group called Adobe and places the Acrobat Reader program icon in that group. To start the Acrobat Reader program, open the Adobe program group and double-click the Acrobat Reader program icon.

Viewing the Acrobat Reader on-line documentation

The Acrobat Reader Installer places the following files in the Acrobat Reader application directory:

- HELPREAD.PDF, the *Adobe Acrobat Reader Program On-line Guide*
- TOURREAD.PDF, the *Adobe Acrobat Reader Tour*
- SUPPORT.PDF, a document that describes how to receive support for the Acrobat Reader program
- LICENSE.PDF, a document that describes the licensing terms for using the Acrobat Reader program

To view the *Adobe Acrobat Reader Program On-line Guide*, start the Reader program and choose Acrobat Reader Help from the Help menu.

To view the Acrobat Reader support or license agreement documents, start the Acrobat Reader program, open the Acrobat Reader program directory (usually c:\acroread), and double-click either SUPPORT.PDF or LICENSE.PDF.

Taking the Acrobat Reader Tour

The Acrobat Reader Tour is a short, interactive tutorial that shows you how to use the most important Acrobat Reader program features. The tour takes about 20 minutes to complete.

TO TAKE THE ADOBE READER TOUR:

1. Start the Acrobat Reader program.
2. Open the Acrobat Reader program directory (usually c:\acroread).
3. Double-click TOURREAD.PDF. The tour title screen appears.
4. Follow the on-screen instructions.

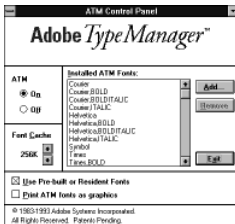
Selecting ATM options

The Adobe Type Manager program gives all your Windows applications a WYSIWYG (What You See Is What You Get) display for Adobe Type 1 fonts. ATM uses Type 1 outline fonts to automatically create bitmapped fonts of any size for your screen display. The ATM program also lets you print Type 1 fonts to non-PostScript printers. For the latest information about the ATM software, see the README file located on the ATM disk.

To select ATM options, you use the ATM Control Panel, which was installed during installation of the Adobe Acrobat software.

TO SELECT ATM OPTIONS:

1. Open the ATM Control Panel by opening the Main program group and double-clicking the ATM program icon.



2. Select the desired ATM options, as follows:
 - *On/Off* turns the ATM software on and off.

- The *Font Cache* determines the amount of system memory used to temporarily store bitmapped characters created by ATM. The default font cache is 256K; Adobe recommends at least 50K for each Type 1 font that you use frequently. Experiment with the font cache size to see what works best with your system.
 - *Use Pre-built or Resident Fonts* tells the ATM software to use bitmapped fonts that reside in Windows and to use bitmapped fonts that reside in the printer.
 - *Print ATM Fonts as Graphics* tells the ATM software to send fonts to the printer as graphic images, and not to use downloadable fonts.
3. Click OK to close the ATM Control Panel.



Adobe Systems Incorporated 1585 Charleston Road, P.O. Box 7900, Mountain View, California 94039-7900
Adobe Systems Europe B.V. Europlaza, Hoogoorddreef 54a, 1101 BE Amsterdam Z-O, The Netherlands
Adobe Systems Japan Swiss Bank House, 4-1-8 Toranomon, Minato-ku, Tokyo 105, Japan

Adobe, the Adobe logo, Acrobat, the Acrobat logo, Adobe Type Manager, ATM, Distiller, and PostScript are trademarks of Adobe Systems Incorporated which may be registered in certain jurisdictions. Microsoft is a registered trademark and Windows is a trademark of Microsoft Corporation.

Hercules is a registered trademark of Hercules Computer Technology.

©1993 Adobe Systems Incorporated. All rights reserved. Part No. 0299 6694 (5/93)